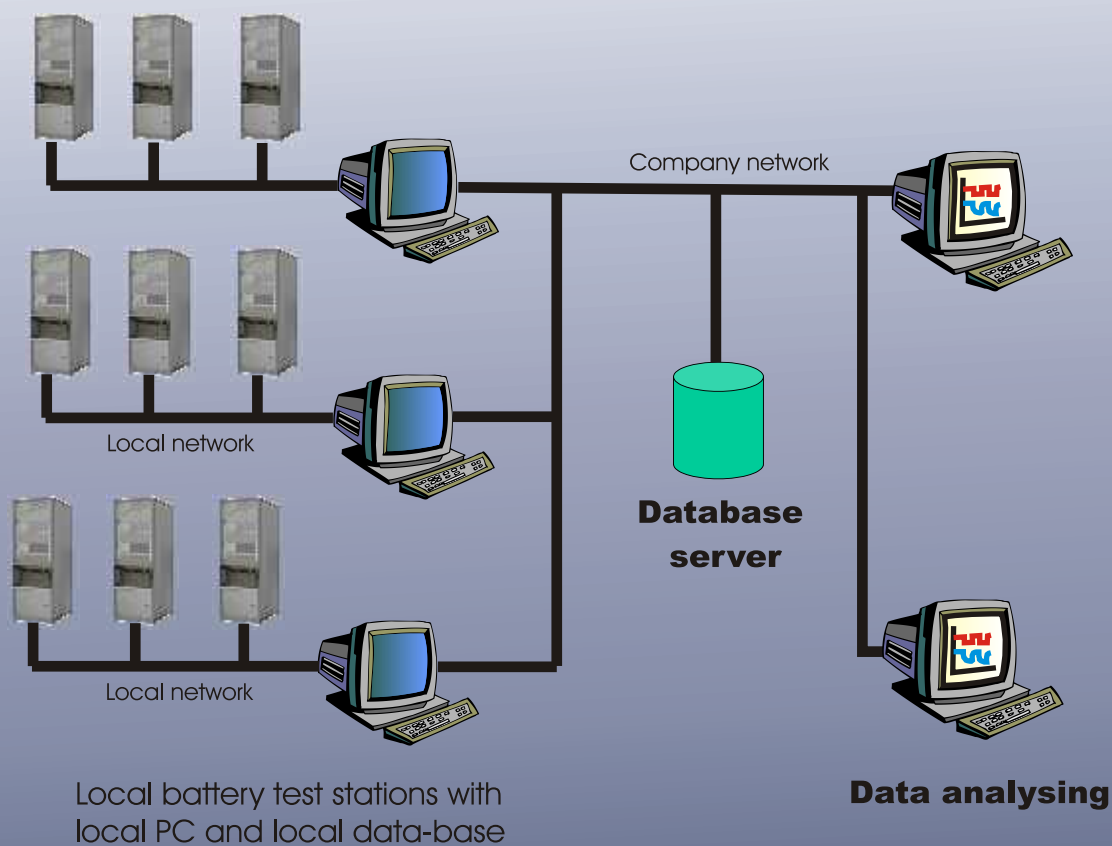


BaSyTec

Client/Server Database System

Improved data handling and data backup



Data backup
Worldwide data access
Improved data analyses
Easy traceability

BaSyTec Client/Server Database

Main Features

All BaSyTec Battery Test System are operated with the BaSyTest software. This software uses a local database system for data management. The local system makes battery testing independent from other network systems. The advantage is a high reliability and high speed. Unfortunately this structure has some disadvantages, as limited remote data access, data management if many test systems are operated by more than one computer, and the necessity of an additional data backup.

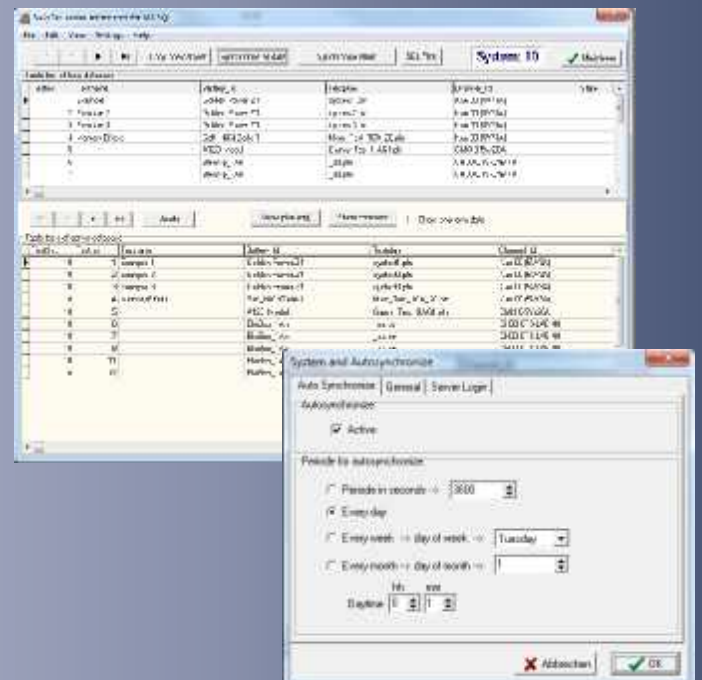
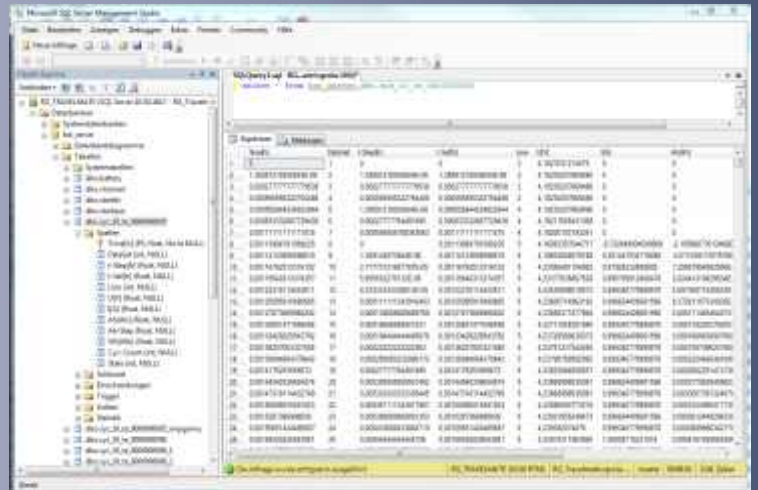
To overcome this disadvantages the BaSyTec Client/Server database system is available. This system combines the advantages of a local database with that of a Client/Server database. The Client/Server Database is an add on and could be used for any existing structure. The data is still stored in the local database(s) and a special tool mirrors all data to the Client/Server database. The client BaSyTest software allows simple data access.

The key features of the Client/Server database are:

- Unlimited number of Battery Test Systems
- Data is mirrored manually or in automatic mode
- Frequency of data transfer in automatic mode can be set
- Independent from the the test software. Network failures do not influence running tests
- Client Software allows data analysing, reports and data export as known from the BaSyTest software.
- Project and battery oriented data structures allow a clear view and fast finding of datasets in the "dataflood"

Server requirements

MS SQL 2005 or 2008 are recommended and supported today for the database server.



MS SQL is a trademark of Microsoft Corporation
MySQL is a trademark of MySQL AB
PostgreSQL copyright by PostgreSQL Developer Group

BaSyTec GmbH

Oellinger Weg 17, 89176 Asselfingen, Germany

Tel.: +49-7345/238 500, Fax: +49-7345/238 725, www.basytec.com